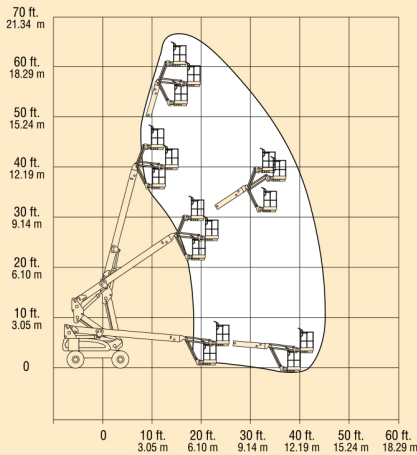


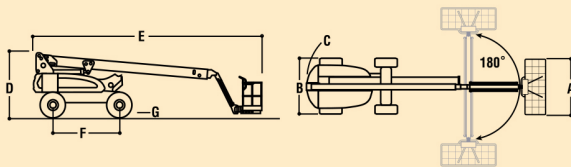


## JLG MODEL E600JP



### REACH SPECIFICATIONS

Platform Height .....	60 ft. (18.29 m)
Horizontal Outreach (Jib) .....	
(JibPLUS) .....	44 ft. 5 in. (13.54 m)
Swing .....	400 Degrees Non-Continuous
Platform Capacity .....	500 lb. (237 kg)
Platform Rotator .....	180 Degrees Hydraulic
Jib (range of articulation) .....	145 Degrees (+75,-70) Vertical
(JibPLUS) .....	180 Degrees Horizontal



### DIMENSIONAL DATA

A. Platform Size .....	(0.76 x 1.83 m)
B. Overall Width .....	(2.44 m)
C. Tailswing .....	(1.22 m)
D. Stowed Height .....	(2.54 m)
E. Stowed Length (Jib) .....	(9.37 m)
(JibPLUS) .....	(10.15 m)
F. Wheelbase .....	(2.74 m)
G. Ground Clearance (Axle) .....	(30 cm)
(Chassis) .....	(58 cm)
Gross Vehicle Weight*(Jib) .....	(6,895 kg)
(JibPLUS) .....	(6,895 kg)
Ground Bearing Pressure .....	(3.7 kg/cm <sup>2</sup> )

### CHASSIS

Drive Speed .....	(4.8 kph)
Gradeability .....	30%
Turning Radius (Inside) .....	(1.22 m)
Turning Radius (Outside) .....	(4.67 m)
Axle Oscillation .....	(20 cm)
Tire Size/Type .....	14 x 22.5 Non-Marking Pneumatic

### POWER SOURCE

Electrical System .....	48V DC
Batteries .....	8 x 6V 415 amp/hr
Drive Motors .....	Dual Electric Traction
Brakes .....	Automatic Spring Applied Multiple Discs
Hydraulic Motor/Pump .....	Series Wound Motor/Gear Pump
Hydraulic Reservoir .....	15 gal. (56.78 L)
Generator Set (M600J, M600JP) .....	Fully Automatic, 45 amp
Engine Fuel Tank (M600J, M600JP) .....	Yanmar 6 hp Diesel Engine
Generator Noise Level (at max. rpm) .....	13 gal. (49.3 L)
	70 dBA @ 7 meters

\*Certain options or country standards will increase weight.

## PERFORMANCE FEATURES

### Standard Features

- 6 ft. (1.83 m) Articulating Jib
- 6 ft. (1.83 m) Vertical and Lateral Articulating Jib (E600JP and M600JP Only)
- Operator Tool Tray
- 30 in. x 72 in. (.76 x 1.83 m) side entry
- Low Mount Platform
- Inward Self-Closing Swing Gate
- 180 Degree Hydraulic Platform Rotator
- Platform Console Machine Status Light Panel\*
- 110V-AC GFI Receptacle in the Platform
- 5 Degree Tilt Alarm/Indicator Light
- Hourmeter
- Battery Condition Indicator
- Lifting/Tie Down Lugs
- 14 x 22.5 Non-Marking Pneumatic Tires
- 400 Degree Non-Continuous Rotation
- Removable Battery Box
- Oscillating Axle
- Manual Descent
- Automatic Traction Control (ATC)
- SCR Automatic Battery Charger
- All Motion Alarm

\*Provides indicator lights at platform control console for system distress, low fuel, 5 degree tilt light, and foot switch status.

### Individual Options:

- 14 x 22.5 Non-Marking Foam Filled Tires
- Flashing Amber Beacon
- All Motion Alarm
- 1. Includes console cover, boom wipers and cylinder bellows.
- 2. Not available on Multi-Powered models.
- 3. 2WD only.
- 4. Includes head and tail lights, and platform worklights.

