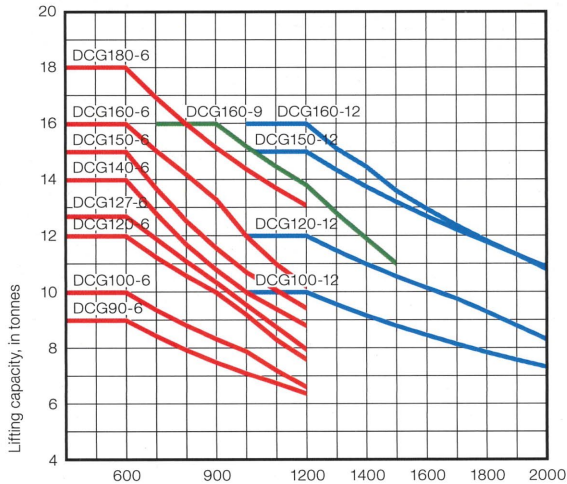
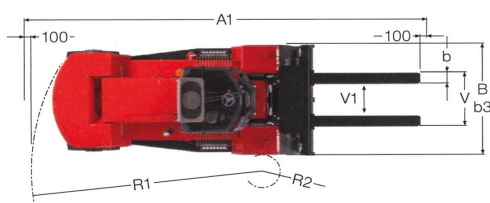
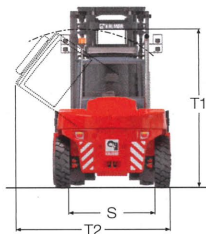
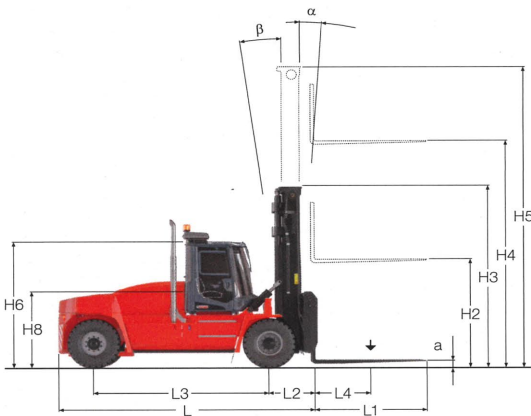


Technical information



Load centre, mm

DCG90-6 to DCG180-6 models:
Full lifting capacity up to 5000 mm lift height with duplex/duplex
freelift/triplex masts and integrated sideshift/fork positioning carriage.



MAIN DATA		DCG 160-12
Model designation		DCG 160-12
Power source		Diesel
Rated capacity / rated load	kg	16000
Load center distance	mm L4	1200
Load distance, center of drive axle to fork	mm L2	1000
Wheelbase	mm L3	3750
WEIGHTS		
Service weight	kg	22400
Axle loading, unloaded front	kg	10500
Axle loading, loaded front	kg	35800
Axle loading, unloaded rear	kg	11900
Axle loading, loaded rear	kg	2600
WHEELS		
Type, front / rear		
Tyre size, front	inch	
Tyre size, rear	inch	
Number of wheels, front / rear (x = driven wheels)		4x / 2
Track width, front / rear	mm S	1855 / 1960
Tyre pressure	MPa	1,0
DIMENSIONS		
Mast tilt, α = forward / β = backward	° α / β	5 / 10
Height of mast lowered	mm H3	4195
Lift height	mm H4	5000
Height of mast extended	mm H5	6565
Truck height – EGO / OHG cabin roof	mm H6	2920
Seat height	mm H8	1770
Height when tilting EGO cab / OHG	mm T1	3395
Width when tilting EGO cab / OHG	mm T2	3380
Truck length (to face of forks)	mm L	5575
Truck width	mm B	2540
Fork dimensions, width	mm b	250
Fork dimensions, thickness	mm a	100
Fork dimensions, length of fork arm	mm l	2400
Fork carriage width	mm b3	2500
Width over fork arms, minimum / maximum	mm V	2360 / 700
Sideshift \pm @ width over forks	mm V1 / V	415 / 1530
Ground clearance, laden, below mast	mm	250
Ground clearance, machine	mm	350
Min. aisle width for 90° stacking with forks	mm A1	8770
Turning radius	mm R1	5175
Internal turning radius	mm R2	600
OTHERS		
Operating pressure for hydraulics	MPa	18,0
Hydraulic oil tank, capacity	l	220
Fuel tank, capacity	l	170
AdBlue tank, capacity	l	15

Lift height H4	Mast height		Free lift H2
	H3 min	H5 max	
DCG100-180**			
5500	3463	7190	1833

+25 mm on H3 and H5 on the DCG140
**DCG150-180-6, DCG160-9, DCG100-160-12

TRIPLEX FFL, CW