

# MOROOKA

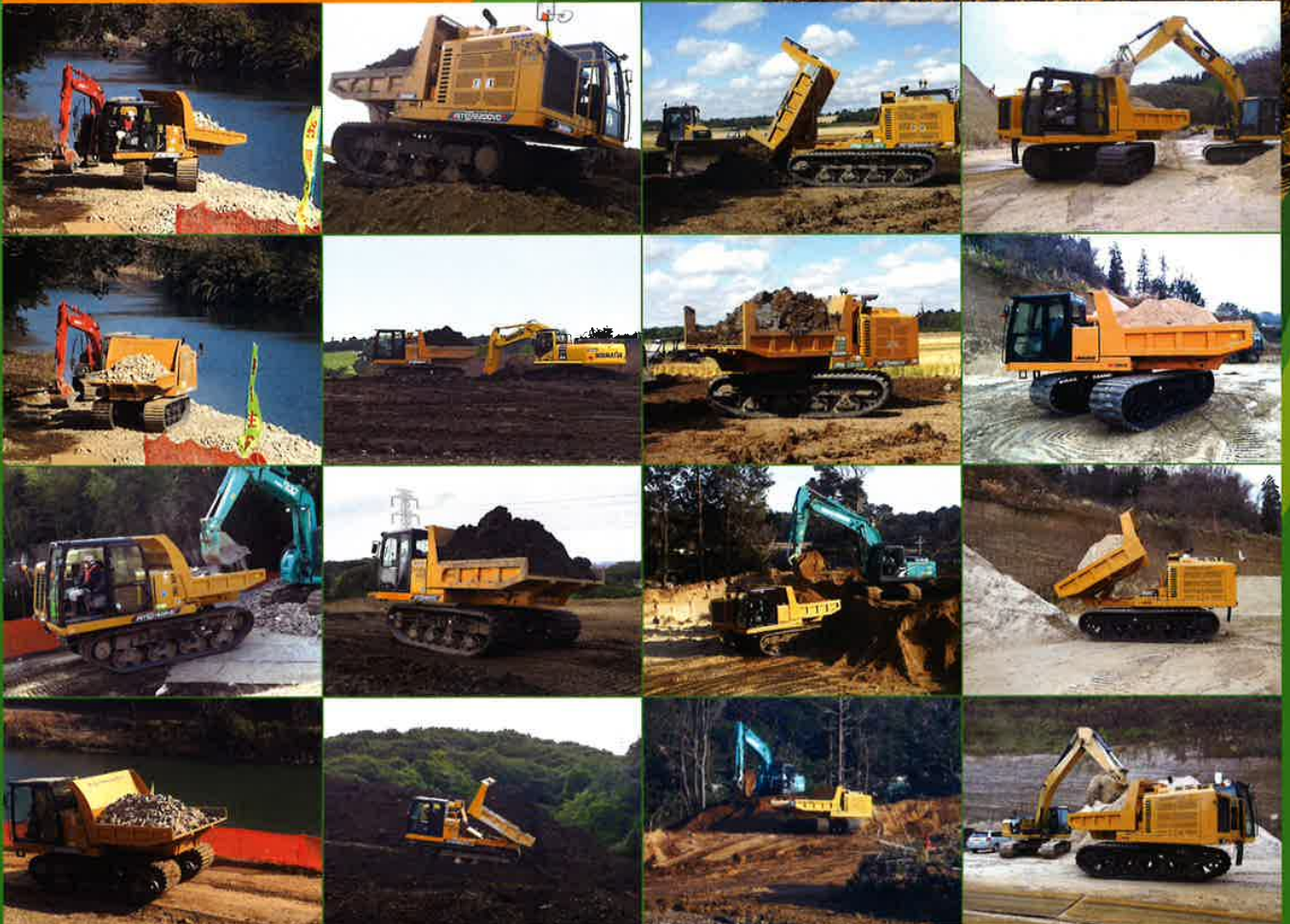
**MST-200VDR**  
**Maximum**  
**Payload**  
**2 ton (4,400lbs.)**



**360°**  
Rotation

**New**  
**MODEL!**  
**VDR SERIES**

## Jobsite / VDR Series





Pioneer of Rubber Crawler Carriers

**MOROOKA**



**MST-200VDR**  
Maximum Payload **2** ton (4,400lbs.)

**MST-1500VDR**  
Maximum Payload **7** ton (15,435lbs.)



**MST-2200VDR**  
Maximum Payload **11** ton (24,255lbs.)

Morooka Crawler Carriers  
**New VDR Series**

Specifications

Model	MST-200VDR (Tier 4F)	MST-1500VDR (Tier 4F, ROPS·FOPS)	MST-2200VDR (Tier 4F, ROPS·FOPS) JAPAN
Machine Weight	kg (lbs.) 2,000 (4,400)	11,500 (25,353)	16,200 (35,714)
Max. Payload	kg (lbs.) 2,000 (4,400)	7,000 (15,435)	11,000 (24,255)
Engine Model	KUBOTA V1505	Cummins QSB 6.7TF	CAT C7.1
Nominal Output/rpm	kw/rpm 18.4/2,500	168/2,200	186/2,200
Overall Length	mm (f.) 2,850 (9.4')	5,690 (18.6')	5,900 (19.3')
Overall Width	mm (f.) 1,520 (5')	2,600 (8.5')	2,980 (9.7')
Overall Height	mm (f.) 1,740 (5.7')	3,230 (10.5')	3,440 (11.3')
Dump Body	mm (f.) 1,500 × 1,400 × 350 (4.9' × 4.5' × 1.1')	2,650 × 2,350 × 420 (8.6' × 7.7' × 1.3')	3,200 × 2,750 × 500 (10.5' × 9' × 1.6')
Min. Ground Clearance	mm (f.) 300 (11")	560 (22")	580 (22")
Rotation Radius	mm (f.) 1,595 (5')	3,370 (11')	3,380 (11')
Crawler Width	mm (f.) 320 (12") *	700 (27")	800 (31")
Drive System	HST	HST	HST
Speed Low/High	km/h (mph) 3.3/5.5 (2.0/3.4)	6.1/8.6 (3.7/5.3)	8/10 (4.9/6.2)
Ground Pressure (Empty)	kPa 19.6	26.9	35.8
Fuel Tank Capacity	liter (gal.) 50 (13.2)	200 (52)	300 (79)

\*Materials and specifications are subject to change without prior notice.